

THE CT





THE CT

Introduction	04 - 07
Driving Dynamics	08 - 09
L-Finesse	10 - 11
Interior Luxury	12 - 15
Advanced Technology	16 - 17
Full Hybrid	18 - 19
F SPORT	20 - 21
Mark Levinson® Audio	22 - 23
Innovative Safety	24 - 25
Lexus Quality	26 - 27
Environmental Leadership	28 - 29
Technology & Specifications	30 - 63

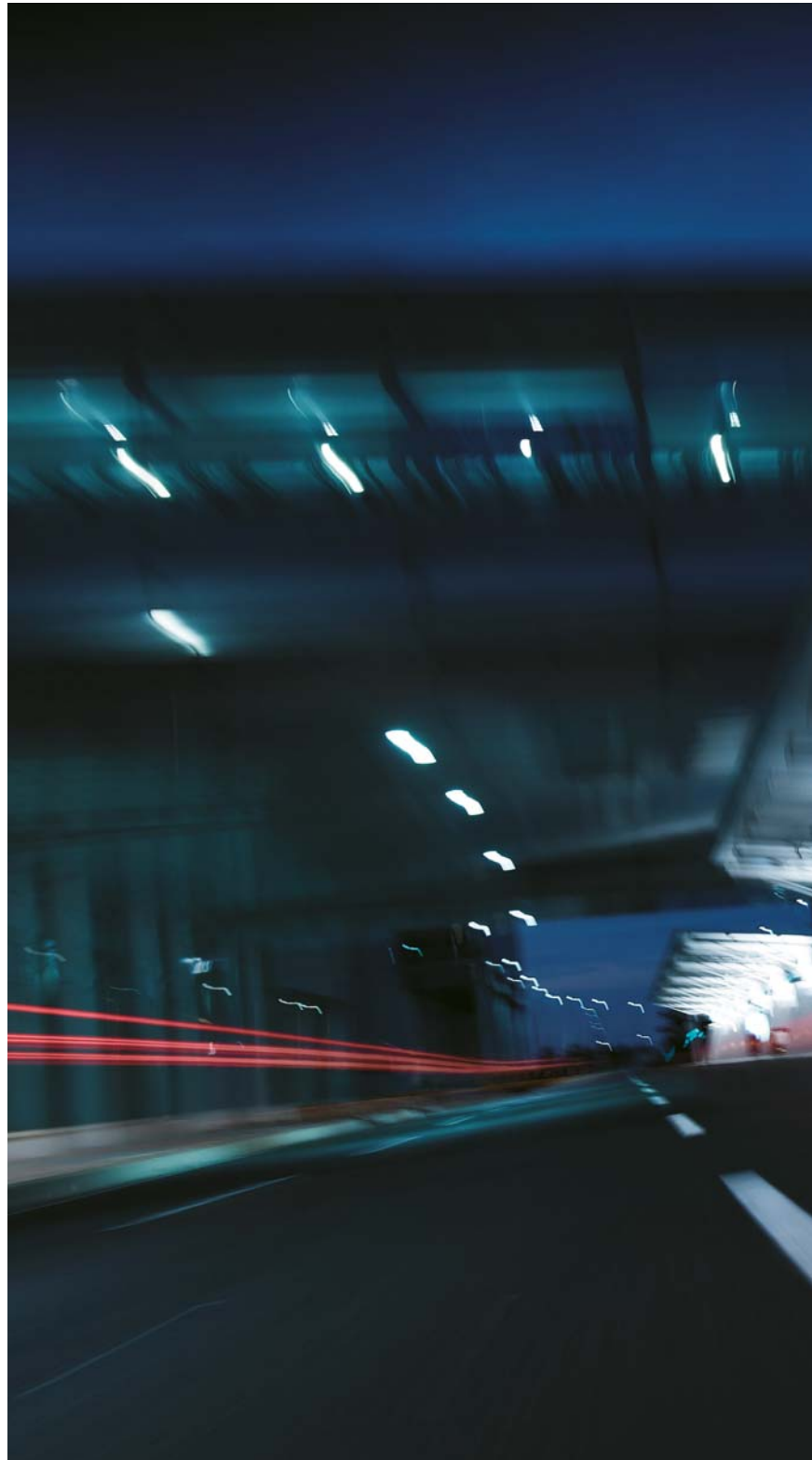


"THE PIONEERING CT 200h FULL HYBRID LUXURY COMPACT OFFERS A UNIQUE BLEND OF LEXUS REFINEMENT AND EXCEPTIONAL ENVIRONMENTAL PERFORMANCE."

Chika Kako, CT Chief Engineer

AMAZING IN MOTION

Driving the CT 200h you'll experience peerless Lexus luxury in a compact car powered by Full Hybrid technology. You'll also enjoy smooth performance, hallmarked by extremely low CO₂ emissions from just 82 g/km. In EV (Electric Vehicle) mode you can drive almost silently, using no fuel and emitting zero emissions. Inside, its cabin offers leading edge audio, multimedia services and award-winning quality overseen by our Takumi master craftspeople. Discover a new level of comfort and refinement in the amazing CT 200h.





THE CT INTRODUCTION

LUXURY GOES COMPACT

DRIVE THE WORLD'S FIRST FULL HYBRID LUXURY
COMPACT, ALSO AVAILABLE AS A DYNAMIC
F SPORT MODEL.



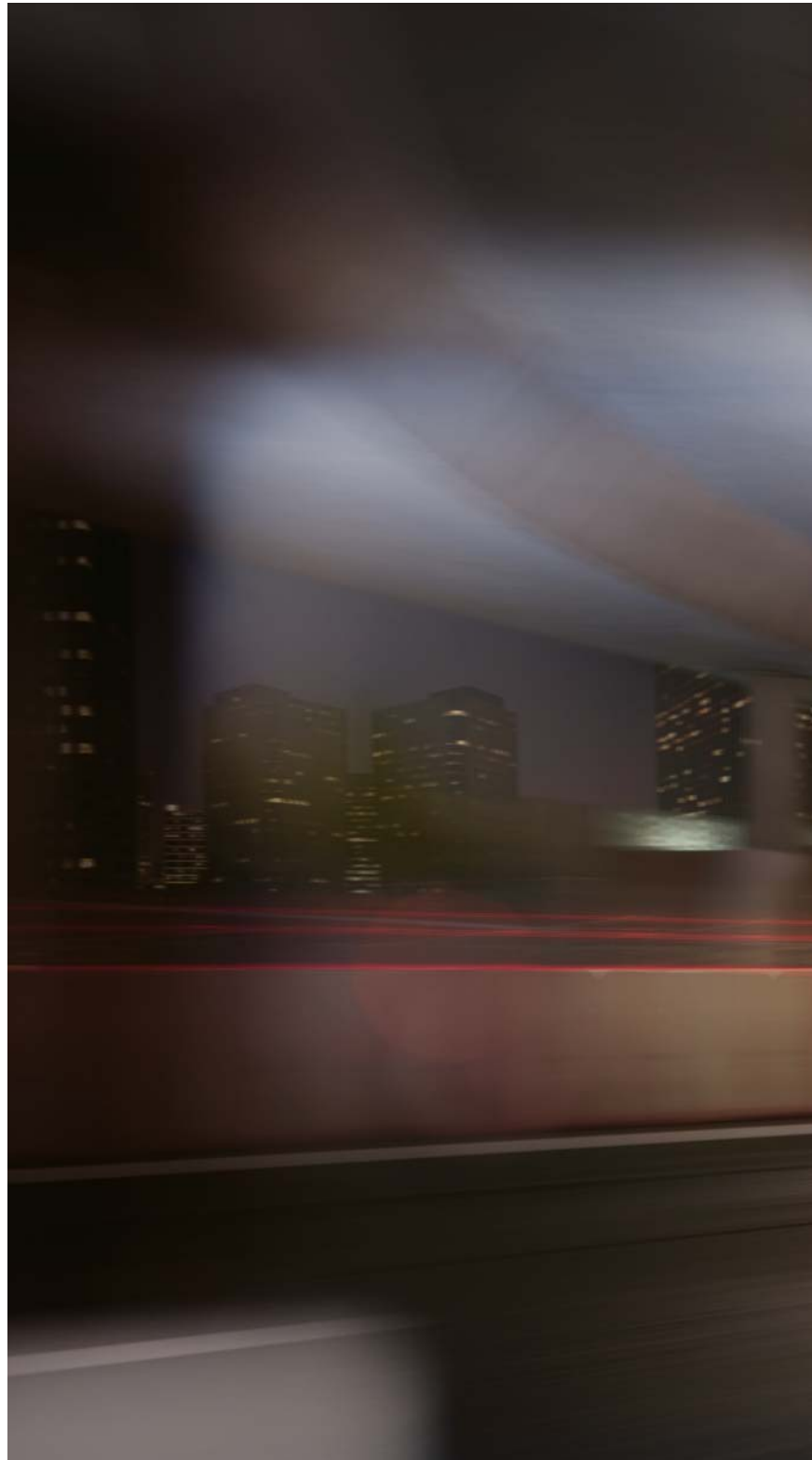
Featuring a distinctive front end design and athletic rear styling, the CT 200h is great fun to own. Inside, its luxurious cockpit offers a unique Lexus welcome, with beautifully stitched leather seating and high-quality materials. However, the CT 200h is not just enjoyable to drive, it's also equipped with advanced technologies like Remote Touch, 13-speaker Mark Levinson® audio and Lexus Premium Navigation. For a more dynamic look, the head-turning CT 200h F SPORT offers 'Dark Rose' leather seats, more responsive suspension and 17-inch F SPORT alloy wheels.



FREEDOM OF THE CITY

**RELAX IN A SMOOTH AND REFINED COMPACT,
USING DRIVE MODE SELECT TO TUNE THE CAR
TO SUIT YOUR MOOD.**

Driving the CT 200h you'll experience a real sense of connectedness in a car that is perfectly balanced and smooth to drive. It is precise and controlled, especially when cornering, thanks to a rigid chassis built using breakthrough adhesive technology, lightweight aluminium components, and Electric Power Steering. Double wishbone rear suspension ensures excellent road holding and a comfortable ride. Using Drive Mode Select – conveniently positioned on the central console – you can choose between ECO mode for maximum efficiency, NORMAL for everyday driving comfort and SPORT for dynamic responsiveness. Or press the EV button to enjoy the CT 200h in Electric Vehicle mode.





URBAN RENEWAL

THE CT 200h FEATURES A BOLD 'SPINDLE GRILLE' AND SOPHISTICATED AERODYNAMIC ENGINEERING.

For the CT 200h our designers applied a dynamic iteration of our L-finesse (L = Leading edge) creative philosophy. Centre of attention is a bold, wide and low 'spindle grille', flanked by jewel-like LED headlights and daytime running lights. For refined handling and reduced wind noise, the CT 200h has a long streamlined profile and a shark fin antenna. For enhanced stability, aerodynamic features include surfboard-like fins beneath the car and winglets on the rear lights and door pillars.













THE CT INTERIOR LUXURY

EVERY BIT A LEXUS

**AVAILABLE WITH SUMPTUOUS LEATHER SEATS,
THE CT 200h OFFERS EXCEPTIONAL COMFORT
FOR ALL ON BOARD.**

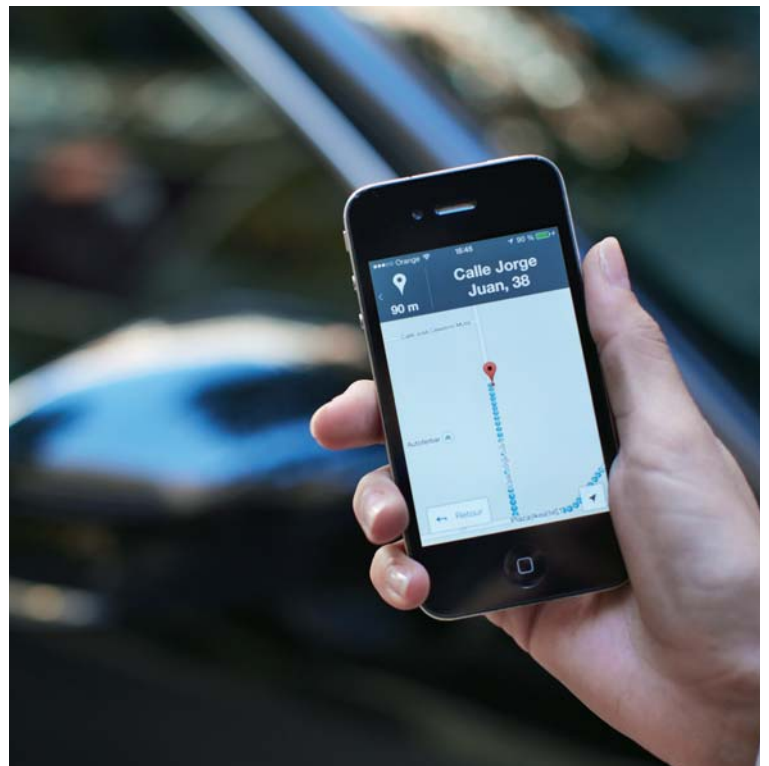
Built at our award-winning Kyushu plant, the CT 200h redefines build quality for this kind of luxury compact. Beautifully finished front seats provide excellent lateral support when cornering and enduring relaxation on longer journeys. Everything you touch communicates the car's quality, from the leather-covered steering wheel to the soft touch leather that juxtaposes with finely crafted metal details. The CT's impressive quietness is partly achieved through extensive sound insulation, much of which is bio-sourced. For comfort, Electronic Climate Control offers precise temperature regulation, and cabin air is filtered to remove pollen and dust.



CONNECTED THINKING

SEAMLESS SMARTPHONE INTERFACE, CONNECTED SERVICES AND NEXT-GENERATION LEXUS PREMIUM NAVIGATION.

The CT 200h is available with the latest Lexus Premium Navigation featuring an elegant 7-inch screen operated by Remote Touch or voice commands. With vivid 3D graphics and many mapping options, once parked, the system can generate a QR code to scan with your smartphone. This helps you reach your final destination on foot. The multimedia system also offers services such as Online Search, Google Street View®, Panoramio® and even reads out incoming text messages. For extra convenience, you can also forward a route from a mobile device to the CT 200h's navigation system.





THE CT FULL HYBRID



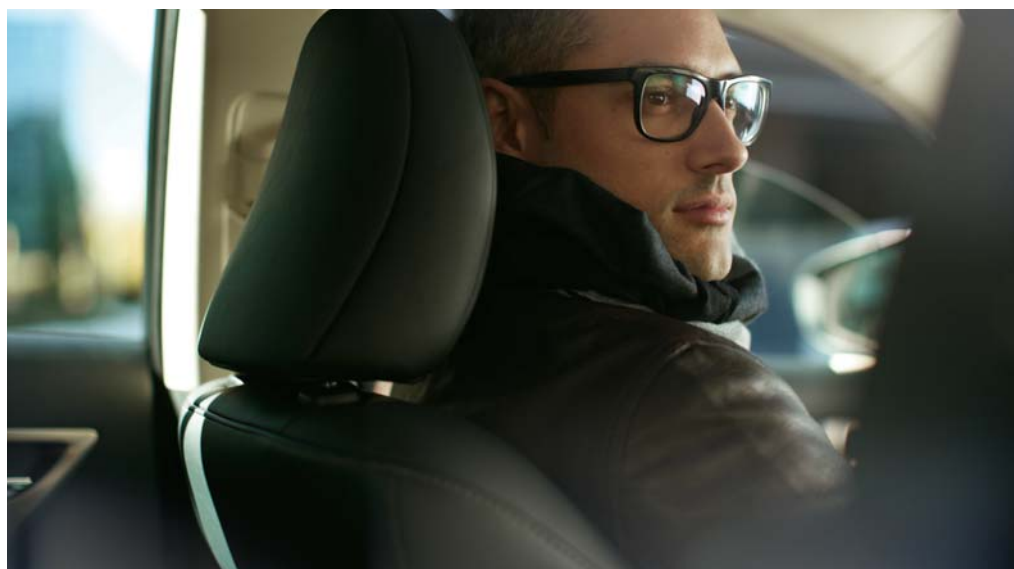
CT 200h



THE CT 200h DELIVERS 136 DIN hp OF FULL HYBRID POWER, YET EMITS JUST 82 g/km* OF CO₂.

Drive the CT 200h and you'll enjoy responsive handling and smooth acceleration. Powered by Lexus Hybrid Drive, the CT 200h seamlessly combines an advanced 1.8-litre Atkinson Cycle petrol engine with a high-output electric motor. Importantly, the CT 200h consumes a mere 3.6 l/100 km* of fuel, or - in near-silent EV (Electric Vehicle) mode - uses no petrol and produces zero emissions. There's ample room for suitcases too, as the hybrid battery takes up minimal space beneath the rear luggage compartment.

* For the Eco grade.





THE CT F SPORT

STAND OUT DESIGN

**DISTINCTIVE BLACK ROOF AND F SPORT STYLING,
DARK ROSE LEATHER SEATS AND 17-INCH
ALLOYS.**

Tuned on the racetrack by our 'Lexus Drive Masters', the CT 200h F SPORT is even more engaging to drive thanks to a revised suspension set-up and more responsive shock absorbers. To the front, dynamic F SPORT styling integrates a larger and more expressive mesh grille. Flared side skirts reinforce the athletic character line of the front bumper, while a 'cut-out' rear spoiler helps increase driving stability. The interior is hallmarked by 'Dark Rose' leather sports seats, an F SPORT perforated leather steering wheel, aluminium pedals and metallic inlays. More details on pages 46/47.







TUNED FOR EXCELLENCE

DISCOVER THE MARK LEVINSON® PREMIUM SURROUND SYSTEM THAT DELIVERS WORLD-CLASS SOUND QUALITY.

The CT 200h can be specified with an amazing 13-speaker Mark Levinson® Premium Surround system. Fitted exclusively to Lexus cars, Mark Levinson has become synonymous with audiophiles for high-performance sound technology. Each speaker of this bespoke system is designed to fit the exact acoustic properties of the cabin. Delivering 7.1-channel digital surround sound, this system provides a true home-theatre-style experience for enjoying music and, when the car is stationary, watching DVDs or playing videos using a VTR cable.

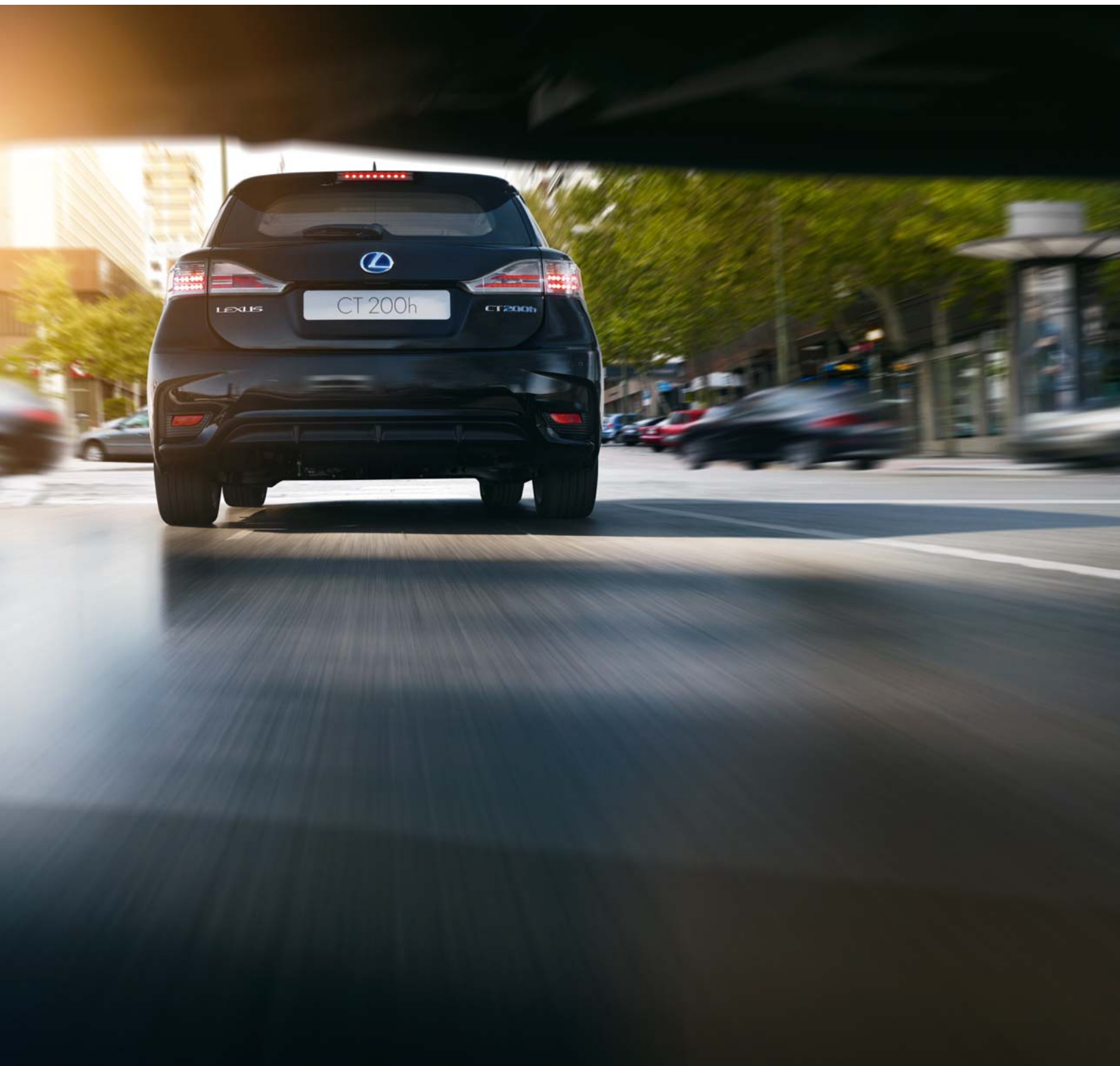


ENHANCED PROTECTION

THE CT 200h OFFERS 5-STAR EURO NCAP PROTECTION AS STANDARD, WHILE PRE-CRASH SAFETY IDENTIFIES DANGER AHEAD.

Equipped with Vehicle Stability Control, Traction Control and Brake Assist, the CT 200h is engineered to avoid danger. Optional Pre-Crash Safety uses millimetre-wave radar to identify danger ahead and can even apply the brakes if necessary. However, in the unlikely event of a collision, you are protected by an incredibly strong passenger safety cell that makes extensive use of high-tensile steel. Enhancing safety even further, the CT 200h features Whiplash Injury Lessening front seats and eight airbags as standard.







DELIGHT IN THE DETAIL

PRODUCTION IS OVERSEEN BY 'TAKUMI' MASTER CRAFTSPEOPLE, WHO ALSO INSPECT EACH CT 200h IN OUR 'QUIET DOME' FACILITY.



In the CT 200h, quality is everywhere: exquisitely finished leather, beautifully grained wood inserts from sustainable plantations, flawless paintwork that shines brighter and longer than on any other compact (we spray it with the same self-repairing paint as used on our LS flagship sedan). Production is performed by highly skilled teams, overseen by 'Takumi' master craftspeople, who check that every CT meets our award-winning standards. On completion, cars are examined for smoothness and quiet running before undergoing a 30 km final test drive.



THE CT

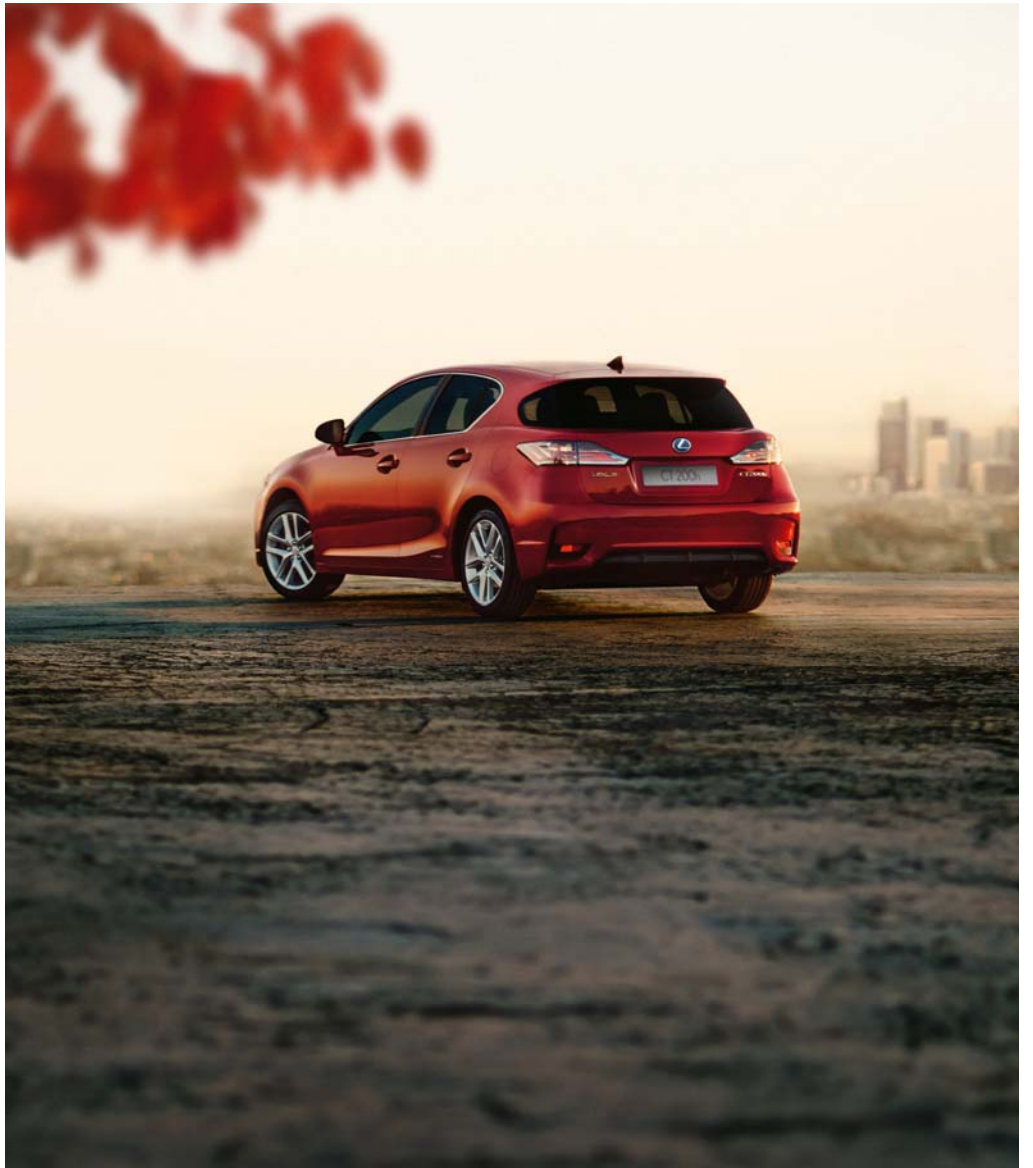
ENVIRONMENTAL LEADERSHIP



THE ECO PIONEER

BUILT USING BREAKTHROUGH ECO MATERIALS, THE CT 200h CAN ALSO CALCULATE THE MOST ECOLOGICAL ROUTE TO SUIT YOUR DRIVING STYLE.

Winner of numerous awards, the CT 200h Full Hybrid luxury compact is designed to minimise environmental impact. Powered by one of the cleanest drivetrains in its class, it is constructed using pioneering, sustainable technologies: boot linings are made from ecological plastic derived from sugar cane resin, while indigenous fast-growing wood veneers are offered as a trim option. Both Panasonic® audio systems feature bamboo charcoal resin speaker diaphragms for improved sound and recyclability. Finally, at the end of its life, up to 85% of the car can be recycled, including the hybrid battery.





TECHNOLOGY & SPECIFICATIONS

Lexus Hybrid Drive	32 - 35
Dynamic Performance	36 - 37
Advanced Safety	38 - 39
Exterior / Interior Features	40 - 43
Audio and Multimedia	44 - 45
F SPORT	46 - 47
Technical Data	48 - 49
Standard / Additional Equipment	50 - 51
Options and Packs	52 - 53
Accessories	54 - 55
Interior Combinations	56 - 59
Exterior Colours	60 - 61
Lexus Care	62 - 63



FULL HYBRID TECHNOLOGY

In 2004, Lexus became the first premium carmaker to perfect Full Hybrid technology. Since then, over 750,000 Lexus hybrid models have been sold. The CT 200h delivers astonishingly smooth performance and low CO₂ emissions from just 82 g/km*. It achieves this by orchestrating a combination of a super-efficient 1.8-litre petrol engine, a high-output electric motor, a compact battery, seamless hybrid transmission and a power control unit. More information: www.lexus.ee or www.lexus.lv or www.lexus.lt

* For the Eco grade.





POWER CONTROL UNIT

Located in the engine compartment, the groundbreaking Power Control Unit is the brain of Lexus Hybrid Drive and controls the allocation of power resources to ensure optimum efficiency at all times.



1.8-LITRE 4-CYLINDER PETROL ENGINE

Featuring Start/Stop capability, Exhaust Gas Recirculation and Variable Valve Timing-intelligent technologies, this quiet and smooth 'Atkinson Cycle' petrol engine delivers exceptional fuel efficiency and significantly reduced emissions.



HIGH-OUTPUT ELECTRIC MOTOR

Generating up to 207 Nm of instantaneous and linear torque, the 82 DIN hp electric motor works together with the petrol engine to boost acceleration, and is the sole source of power in EV (Electric Vehicle) mode.



ADVANCED COMPACT BATTERY

Lexus Hybrid Drive includes a high-output, nickel-metal hydride 202 V battery controlled by sophisticated energy-management software. Located under the luggage area, without compromising interior space, the battery is recharged as necessary while driving and requires no external charging.



REGENERATIVE BRAKING

Especially during braking, but also when cruising, the electric motor acts as a high-output generator, recovering kinetic energy as electrical energy. This charges the hybrid battery for use later when accelerating hard, or driving in EV (Electric Vehicle) mode.



DRIVE MODE SELECT

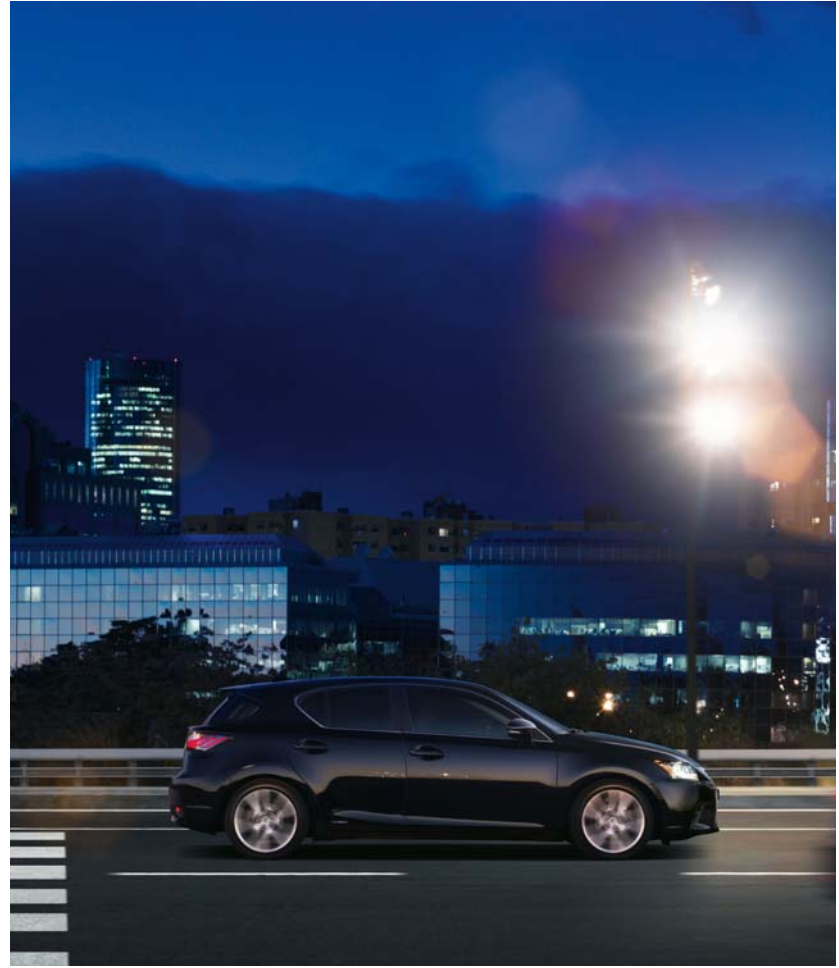
The CT 200h has four selectable drive modes. EV mode provides whisper quiet, emission-free progress purely using electric power. ECO and NORMAL modes combine petrol and electric power for relaxed, higher speed driving. SPORT mode delivers a more dynamic driving experience.

EXPERIENCE LEXUS HYBRID DRIVE



START UP, DRIVING OFF

When starting off, the electric motor can propel the CT 200h up to 45 km/h, with electric power being supplied from the hybrid battery. At this point the vehicle is almost silent, uses no petrol and produces zero emissions.



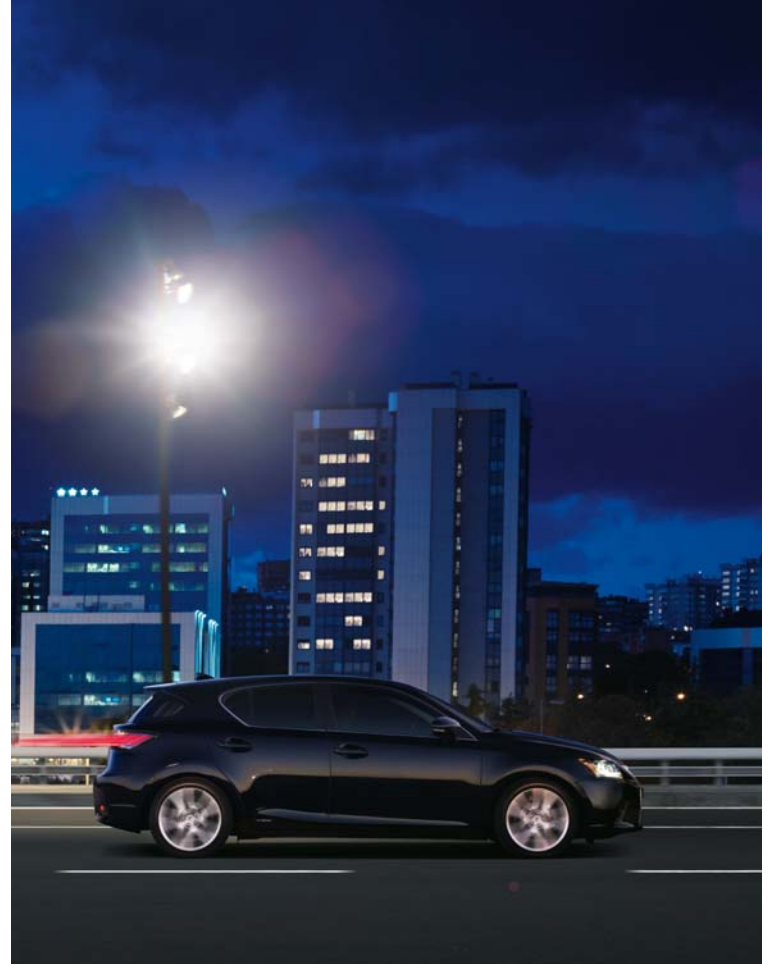
NORMAL DRIVING CONDITIONS

At speeds above 45 km/h the advanced petrol engine cuts in, almost silently, but still receives assistance from the electric motor when required. Through the near perfect distribution of its dual power sources, the CT 200h provides exceptional driving comfort – together with lower emissions and fuel consumption.



FULL THROTTLE ACCELERATION

Accelerate powerfully and the 82 DIN hp electric motor instantaneously supplements the 1.8-litre petrol engine. This delivers a surge of torque to provide powerful linear acceleration precisely when you need it.

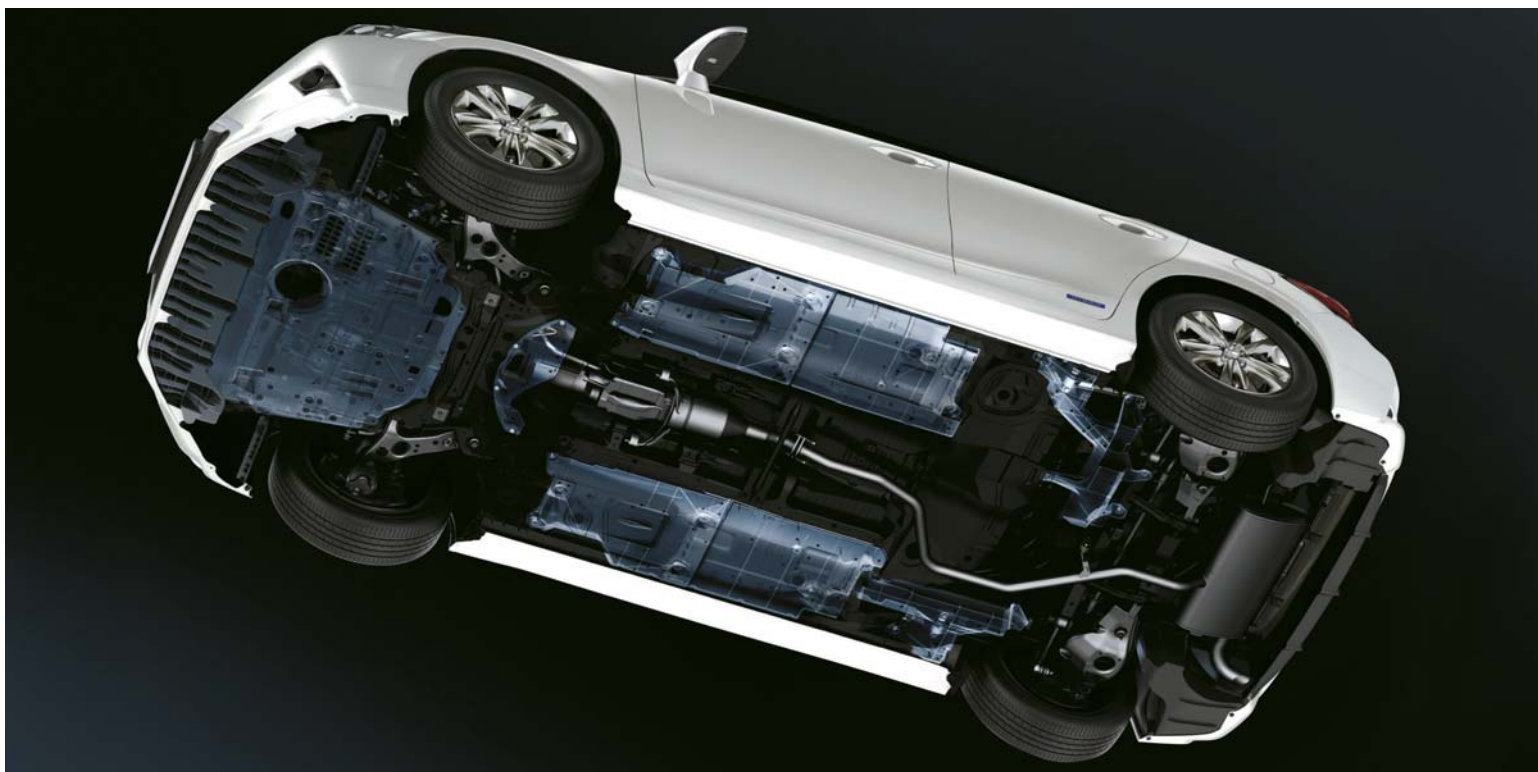


DECELERATION, STOPPING, BRAKING

When decelerating or coming to a halt, the petrol engine turns off, cutting emissions to zero. Brake, or take your foot off the accelerator, and regenerative braking harnesses the kinetic energy lost in other cars. It converts this into electrical energy for storage in the hybrid battery, which is one reason why you never need to recharge a Lexus Full Hybrid.

DYNAMIC PERFORMANCE

The CT 200h was tested and refined in the world's most advanced driving simulator – and then on the racetrack. While breakthrough adhesive bonding techniques increase the rigidity of the chassis, the extensive use of lightweight materials results in a car that offers a great sense of enjoyment and rewards driver input with extremely precise handling.



AERODYNAMICS

The CT 200h has excellent aerodynamics, thanks to its low bonnet, long roofline and rear spoiler/diffuser/winglets. A look underneath this breakthrough compact reveals more, with aerodynamic engine/fuel tank covers and surfboard-like fins that provide better stability. This attention to detail not only enhances dynamic performance and handling, but also improves fuel efficiency and reduces wind noise.



HILL-START ASSIST CONTROL

Hill-start Assist Control maintains brake pressure to help prevent the CT 200h from moving backwards when starting off on a slope. In addition to reducing driver fatigue, Hill-start Assist Control also minimises wheel-spin on slippery inclines.



DOUBLE WISHBONE REAR SUSPENSION

The double wishbone/trailing arm rear suspension developed specially for the CT 200h delivers a smooth ride, refined cornering agility and superb straight-line stability. More complex to manufacture than strut-based alternatives, its compact design encroaches less into the rear luggage space. Performance dampers are also available front and rear. These absorb fine vibrations, increase ride comfort and create a more precise steering feel.



ELECTRONIC BRAKE-FORCE DISTRIBUTION / BRAKE ASSIST SYSTEM

Electronic Brake-force Distribution works with ABS to ensure optimum brake-force is applied to each wheel, according to the road conditions. The Brake Assist System comes into action during emergency braking and increases brake-force automatically if required.



TRACTION CONTROL

Traction Control increases the CT 200h's ability to grip the road, especially when starting off or accelerating on uneven or slippery surfaces. Corrective measures are applied the moment the risk of wheel-spin is detected, thereby maintaining traction.



VEHICLE STABILITY CONTROL

Vehicle Stability Control helps prevent the loss of vehicle control, particularly when cornering quickly or at the onset of a skid. Stability is improved and vehicle speed reduced by the selective application of brakes and/or power reduction.

ADVANCED SAFETY

The CT 200h is equipped with Vehicle Stability Control, and is available with advanced Pre-Crash Safety technology that uses millimetre-wave radar to calculate collision risk ahead. In addition to an immensely strong passenger safety cell, occupant protection is provided by eight airbags.



PASSENGER SAFETY CELL

For added safety, the CT 200h has a very strong passenger cell. The car's main pillars are specially reinforced and high tensile steel has been used strategically throughout. Crumple zones front and rear absorb energy in a crash, as does the steering column, which is engineered to collapse on impact.



EIGHT AIRBAGS

The CT 200h is equipped with eight airbags and front seatbelt pre-tensioners. In a collision, impact intensity sensors activate front dual-stage driver/passenger airbags and side airbags accordingly. Front seat passengers also benefit from knee airbags, while curtain shield airbags run the full length of the side windows.



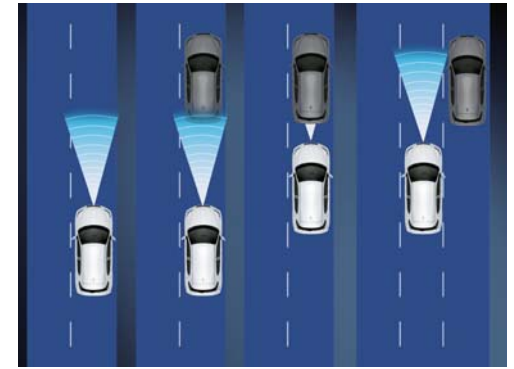
TWIN-CHAMBER PASSENGER AIRBAG

Crash tests show that the front seat passenger travels further than the driver before hitting the front airbag. In order to safely 'catch' the passenger in a collision, an innovative twin-chamber airbag is fitted.



■ PRE-CRASH SAFETY

Pre-Crash Safety uses millimetre-wave radar and an on-board computer to calculate collision risk ahead. If the risk is high it alerts the driver using audible and visual warnings and increases brake pressure. If impact is unavoidable Pre-Crash Safety applies the brakes and tightens the front seatbelts.



■ ADAPTIVE CRUISE CONTROL

Using the Pre-Crash Safety radar, Adaptive Cruise Control (ACC) maintains a set distance between the CT 200h and the vehicle ahead, even if that vehicle varies its speed. Once the road is clear, ACC automatically returns to the originally specified cruising speed.



WHIPLASH INJURY LESSENING SEATS

The front seat and headrest design minimise whiplash-inducing neck motion in a rear impact. Reinforced side frames let the torso sink into the seatback, while the forward placement of the headrest supports the head more effectively.



PEDESTRIAN PROTECTION

The CT 200h bonnet is optimised to ensure better energy absorption in a collision with a pedestrian. In addition, the windscreen wiper area is designed to help reduce pedestrian injuries in an accident.



EURO NCAP 5-STAR RATING

Providing realistic and independent assessment of the safety performance of cars sold in Europe, Euro NCAP awarded the CT 200h the maximum 5-star rating. This ranks the CT 200h among the very safest cars in the premium compact segment.

EXTERIOR FEATURES



15" ALLOY WHEELS

Lightweight and compact, these 15" alloy wheels are now specified with low rolling resistance tyres. This wheel and tyre combination reduces CO₂ and fuel consumption. (Standard on Eco grade.)



16" ALLOY WHEELS

5-twin-spoke alloy wheels, with subtle grooves in each spoke, add a touch of understated elegance. Fitted with 205/55 R16 tyres, this wider wheel and tyre combination provides extra grip for improved traction. (Standard on Comfort grade.)



17" ALLOY WHEELS

Dynamic 5-twin-spoke alloy wheels, equipped with lower profile 215/45 R17 tyres, create a purposeful and sporty impression. (Standard on Executive grade.)



16" FUYU ALLOY WHEELS

10-spoke wheels with a metallic finish complement the CT 200h's sporty looks.

■ Available as an option, part of a pack or standard on specific grade(s). Please see pages 50 to 53 for further details.

○ Available as an accessory.



○ **17" ZENGA ALLOY WHEELS**

10-spoke design with a stunning metallic finish.



○ **17" ZENGA ALLOY WHEELS**

10-spoke design in a distinctive anthracite colour.



○ **17" ZENGA ALLOY WHEELS**

10-spoke design in a distinctive black look.



○ **16" FUYU ALLOY WHEELS**

10-spoke anthracite wheels for a stunning impression.



○ **17" YUME ALLOY WHEELS**

5-twin-spoke design with attractive pearl white finish.



○ **17" YUME ALLOY WHEELS**

5-twin-spoke design with a dynamic black finish.

EXTERIOR FEATURES



■ HALOGEN HEADLIGHTS

Featuring halogen bulbs, the headlight design is modern and impactful. Light Emitting Diode daytime running lights create a distinctive appearance and ensure the CT 200h is highly visible to other road users.



■ LED HEADLIGHTS

The Light Emitting Diode (LED) low-beam headlights on the CT 200h use less energy, last longer and react more quickly than conventional bulbs. They are specified with high-pressure cleaners, auto-levelling and LED front fog lights.



■ PRIVACY GLASS

The rear side windows and rear window are treated with a reflective tint, which provides rear seat passengers with privacy. This does not, however, restrict the view from inside the CT 200h to the world outside.



○ CARBON MIRROR COVERS

Door mirror covers extend the CT 200h sports theme. Their carbon fibre appearance and aerodynamic form maintain design harmony while presenting a distinct touch of excitement.



■ PARKING ASSIST

Available front and rear, bumper mounted sensors link to in-car audio signals that become increasingly frequent the closer you get to an obstacle.

■ Available as an option, part of a pack or standard on specific grade(s). Please see pages 50 to 53 for further details.

○ Available as an accessory.

INTERIOR FEATURES



DRIVING COMFORT

The CT 200h features a spacious interior, rich in the refinement and amazing quality for which Lexus is legendary. The driving position is sporty and focused, with the front seats providing great comfort and lateral support.



COMPACT FLEXIBILITY

The CT 200h offers excellent luggage space and load carrying versatility. With all seats upright, there is 375 litres of load volume; enough for two large suitcases. The rear seats fold 60/40, and folding them down together creates a virtually flat storage area that boosts load capacity to 985 litres.



STANDARD CENTRE CONSOLE

The front centre console is ergonomically designed to let the driver intuitively operate the gear lever and Drive Mode Select, while the audio and climate systems can be controlled from both front seats.



SPORTS STEERING WHEEL

An LFA-inspired, 3-spoke leather steering wheel with ergonomic finger rests makes the CT very precise to drive. Without taking your hands off the wheel, you can control audio, telephone, voice command, multi-information display and, where optionally specified, Adaptive Cruise Control.



DYNAMIC INSTRUMENTATION

Crisp, white instrumentation has anti-glare Optitron technology for easy reading, and the background lighting switches from blue to red when you select SPORT mode. The multi-information display can be upgraded to a 4.2-inch Thin Film Transistor colour version. In addition to vehicle data, this displays multimedia content. For instance, audio track titles, navigation directions, or when your smartphone is connected, the name, photograph and phone number of the person calling you.

AUDIO AND MULTIMEDIA



■ LEXUS MEDIA DISPLAY

The CT 200h can be ordered with Lexus Media Display, which features a 7-inch screen operated by a rotary dial. You can adjust audio and climate settings or view the energy monitor via this display. Compatible smartphones can be 'mirror linked', so you can view and control certain elements of your phone.



■ ROTARY DIAL

A rotary control dial on the centre console enables the driver or front seat passenger to operate or view the main systems via the 7-inch display.



■ LEXUS NAVIGATION

The CT 200h can be specified with Lexus Navigation. This then works via the centrally positioned Lexus Media Display. It is fast, user-friendly and offers a great variety of mapping options.



■ AUX, USB AND VTR

With Lexus Media Display specified, the AUX socket is upgraded to be compatible with VTR input. This lets you watch video transmissions on the central screen. An extra USB port is fitted, letting you connect or charge two multimedia devices.



6-SPEAKER PANASONIC®

Featuring bio-sourced bamboo charcoal resin speaker diaphragms for clearer sound performance and recyclability, a 6-speaker Panasonic® audio system is fitted as standard. This features an AM/FM RDS tuner and CD player and has Bluetooth® connectivity for audio / mobile phone.



■ PARKING ASSIST MONITOR

Engage reverse and the view behind the car is relayed to the Lexus Media Display. With the upgraded Lexus Premium Navigation specified, on-screen guides are additionally displayed to assist parking.



■ LEADING EDGE MULTIMEDIA

With the CT 200h, you have the option to specify the very latest multimedia technology. This features Lexus Premium Navigation with Connected Services like Google Street View® and the ability to calculate the most ecological route.



■ REMOTE TOUCH

With Lexus Premium Navigation specified, next-generation Remote Touch replaces the rotary dial. Featuring single press confirmation, it lets users interact intuitively with the central multimedia display. Ergonomically designed, Remote Touch is close at hand and as easy to use as a computer mouse.



■ LEXUS PREMIUM NAVIGATION

The 7-inch screen is operated by Remote Touch or voice commands. With vivid 3D graphics and many mapping options, once parked, the system can even generate a QR code for your smartphone, to help you reach your final destination on foot.



○ LEXUS HOTSPOT

Mobile connectivity for up to 5 WiFi capable devices such as laptops, tablets and phones. It wires into the car's electrics and uses your choice of SIM card.



■ LEXUS CONNECTED SERVICES

The CT 200h offers next-generation services like Online Search, Google Street View®, Panoramio® and Connected Traffic. For extra convenience you can even forward a route from your laptop or tablet to your car's navigation system.



■ DIGITAL CONNECTIVITY

Multiple digital applications can be synchronised to the multimedia display. For example, the entire address book can be simply downloaded from most smartphones, and then scrolled through on the display.



■ 10-SPEAKER PANASONIC®

Featuring energy-saving technology, the 10-speaker Panasonic® system, with a separate lightweight amplifier, offers even greater audio fidelity. Supplied with Lexus Premium Navigation, a DVD player lets you watch favourite movies on the central screen, when stationary.



■ MARK LEVINSON®

The 13-speaker Mark Levinson® Premium Surround system is tailored to the specific acoustic properties of the CT 200h cabin. Delivering 7.1-channel digital surround sound, it provides a home-theatre experience for enjoying CDs and DVDs.

■ Available as an option, part of a pack or standard on specific grade(s). Please see pages 50 to 53 for further details.

○ Available as an accessory.

F SPORT

Developed by the team that tuned the LFA supercar and RC F high performance coupé, the CT 200h F SPORT model carries the spirit of these two amazing cars. Exclusive front and rear design elements, together with the addition of discreet side skirts, improve aerodynamic performance. And, for a more direct and responsive drive, the team re-tuned the suspension and steering set-up.



F SPORT 17" ALLOY WHEELS

17-inch alloy wheels feature a 5-twin-spoke design with a two-tone finish. Low-profile tyres ensure superb cornering grip.



F SPORT 17" ALLOY WHEELS

5-triple-spoke wheels with a truly dynamic sports design and anthracite finish.



F SPORT BADGE

Although discreet, the F SPORT logo is a badge of distinction. The 'F' refers to the birthplace and primary testing site of our high-performance F SPORT cars: Fuji Speedway, located near Mount Fuji.



F SPORT FRONT DESIGN

The CT 200h F SPORT is unmistakably dynamic, featuring a bold and distinctive front spindle grille with special 'L-mesh' inserts. Wider and deeper, the lower grille incorporates an aerodynamic front lip spoiler and fins. Exclusive LED front fog lights can be specified as an option along with LED low beam headlights.



F SPORT BLACK ROOF AND REAR SPOILER

Available with an eye-catching black roof - for a dynamic two-tone look - the CT 200h F SPORT has a larger rear spoiler with 'cut out' vents. This, along with an integral grey bumper diffuser, helps improve downforce and aerodynamic efficiency for increased handling stability.

DARK ROSE LEATHER UPHOLSTERY

Vibrant 'Dark Rose' leather upholstery is the signature interior colour on the CT 200h F SPORT, with a black roof lining as standard. Silver coloured, metal film inlays perfectly complement the drilled sport pedals, scuff plates and other F SPORT interior trim elements.



F SPORT STEERING WHEEL

Featuring the F SPORT logo, this beautifully crafted steering wheel was inspired by that of our iconic LFA supercar. Finished in perforated leather, the F SPORT gearshift design matches the steering wheel to create an exciting sports ambiance.



LEATHER STITCHING

Attention to detail is everywhere on the CT 200h F SPORT, with beautiful coloured stitching giving an extra dynamic look to the cabin.



DRILLED SPORT PEDALS

Offering excellent grip characteristics, drilled aluminium pedals reflect the motorsport design heritage of the CT 200h F SPORT models.



F SPORT SCUFF PLATES

Front door scuff plates provide durable protection. Finished with a brushed aluminium look, they are inscribed with the Lexus logo in jet black.

TECHNICAL DATA

MAXIMUM OUTPUT	
DIN hp / kW	136 / 100
ENGINE	
Capacity (cm³) / Cylinders / Valves	1798 / L4 / 16
Valve mechanism	VVT-i
Fuel type / Octane rating	Petrol / 95 or +
Max. power (DIN hp / kW @ rpm)	99 / 73 @ 5200
Max. torque (Nm @ rpm)	142 @ 2800 - 4400
ELECTRIC MOTOR	
Type	AC synchronous, permanent magnet
Max. output (DIN hp / kW)	82 / 60
Max. torque (Nm)	207
HYBRID BATTERY	
Type	Nickel-Metal Hydride (Ni-MH)
No. of cells	168
Nominal voltage / System voltage (V)	202 / 650
TRANSMISSION	
Driven wheels	Front-wheel drive
Transmission	Electronic-Continuously Variable Transmission
PERFORMANCE	
Max. speed (km/h)	180
0-100 km/h (s)	10.3
CO ₂ EMISSIONS* (g/km)	
Emissions level	Euro 6
Combined	82 / 88 / 94 ¹

FUEL CONSUMPTION* (l/100 km)	
Combined	3.6 / 3.8 / 4.1 ¹
BRAKES	
Front	Ventilated discs
Rear	Solid discs
SUSPENSION	
Front	MacPherson strut, coil springs
Rear	Double wishbone
STEERING	
Type	Rack and pinion
Turns (lock to lock)	2.7
Min. turning radius (m)	5.2
WEIGHTS (kg)	
Gross vehicle	1790 / 1845 ²
Kerb (min. - max.)	1370 - 1410 / 1410 - 1465 ²
DRAG COEFFICIENT	
Cd value	0.28 / 0.29 ²
CAPACITIES (l)	
Fuel tank	45
Luggage compartment ³	
- rear seats upright (loaded to the luggage cover)	275
- rear seats upright (loaded to the roof)	375
- rear seats folded down (loaded to the roof)	985

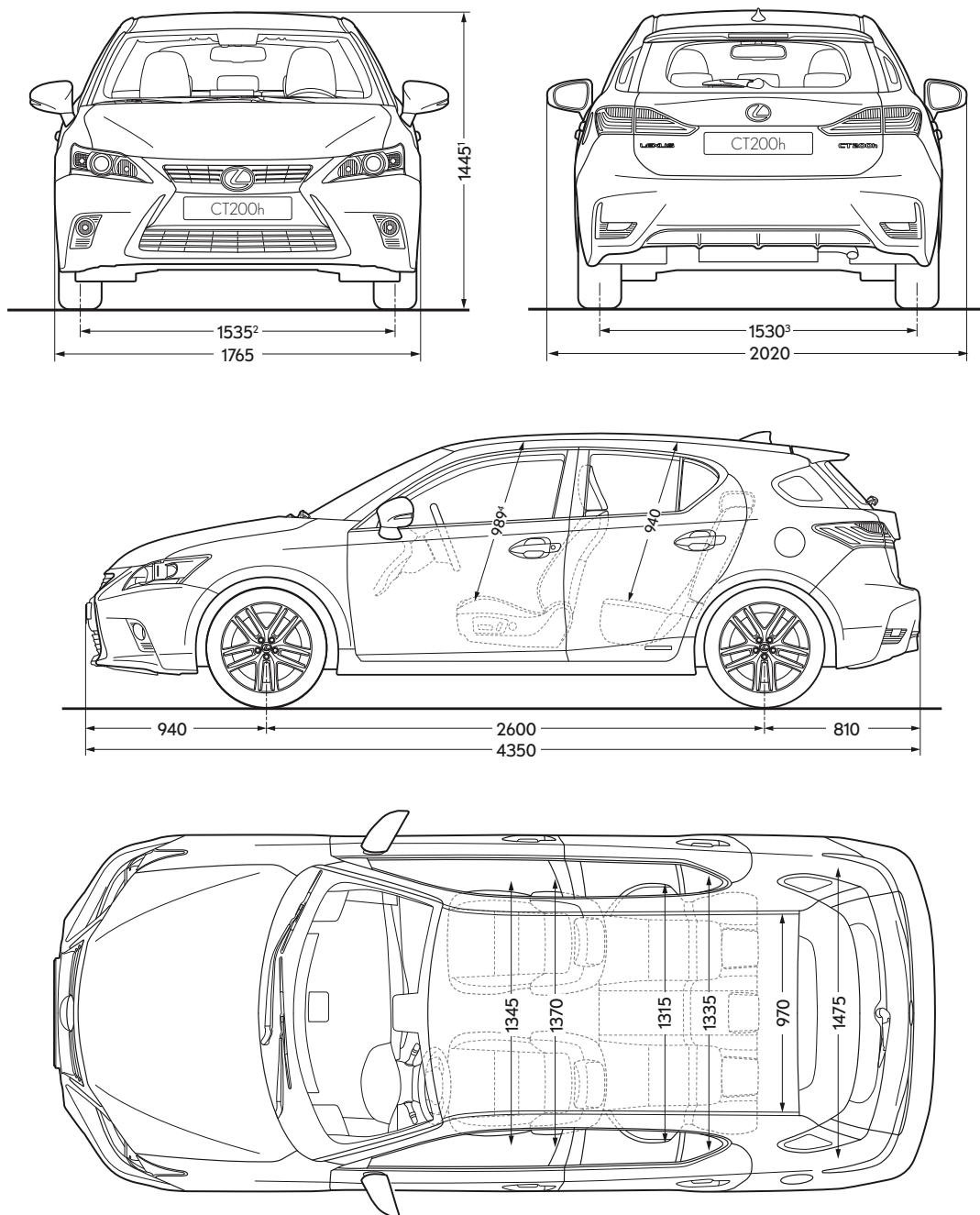
¹ Figures for the CT 200h differ by grade and alloy wheel size. 1st figure is for the CT 200h Eco grade with 15" alloy wheels. 2nd figure is for Comfort grade with 16" alloy wheels. 3rd figure is for F SPORT and Executive grades with standard specification 17" alloy wheels.

² 1st figure is for the Eco grade. 2nd figure is for all other grades, irrespective of alloy wheel size.

³ Calculated as per the VDA method on a vehicle specified with tyre repair kit. All figures quoted include the under floor storage area in the luggage compartment. With a temporary spare wheel, each figure is reduced by 30 litres.

* The fuel consumption and CO₂ values are measured in a controlled environment, in accordance with the requirements of Directive 80/1268/EEC incl. its amendments, on a vehicle with European Standard equipment. For further information, or if you are interested in purchasing a vehicle with European Standard equipment, please contact your Lexus Authorised Importer. The fuel consumption and CO₂ values of your vehicle may vary from those measured. Driving behaviour as well as other factors (such as road conditions, traffic, vehicle condition, tyre pressure, installed equipment, load, number of passengers) play a role in determining a car's fuel consumption and CO₂ emissions.

Please note: further Technical Data, including any updates, can be found at www.lexus.ee/lexus.it/lexus.lv



¹ Figure quoted is for the Eco grade. Equivalent figure for Comfort, F SPORT and Executive grades is 1455.

² Figure quoted is for the Eco grade. Equivalent figure for Comfort, F SPORT and Executive grades is 1525.

³ Figure quoted is for the Eco grade. Equivalent figure for Comfort, F SPORT and Executive grades is 1520.

⁴ Figure quoted is for CT models specified with the standard roof. Equivalent figure with the optional glass sunroof specified is 974.

Please note: the dimensions illustrated / noted above are measured in millimetres.

STANDARD EQUIPMENT FOR ALL GRADES

ACTIVE SAFETY AND DRIVING DYNAMICS

Active brake lights
Braking, stability, steering and traction systems¹
- ABS / BAS / BOS / EBD / ECB-R / EPS / TRC / VSC
Drive Mode Select
- ECO / NORMAL / SPORT
EV (Electric Vehicle) mode
Hill-start Assist Control (HAC)
Tyre Pressure Warning System (TPWS)

PASSIVE SAFETY

8 airbags in total
- driver and front passenger; head, side and knee
- cabin sides; full-length curtain shield
Airbag cut-off switch, front passenger
Audible and visual front seatbelts reminder
ISOFIX attachment, outer rear seats
Seatbelt pre-tensioners, front seats
Whiplash Injury Lessening (WIL) front seats and headrests

EXTERIOR

Antenna, shark fin design
Door mirrors
- electrically adjustable, folding and heated
- integral turn signal indicators and puddle lights
Light Emitting Diode (LED)
- daytime running lights
- rear combination lights
- rear licence plate illumination
Rain sensing wipers
Ultra Violet (UV) and heat insulating tinted glass

SECURITY

Auto door-locking
Immobiliser
Alarm system (Intrusion sensor, Inclination sensor, Siren)

AUDIO, COMMUNICATION AND INFORMATION

AUX socket and USB port
Bluetooth® mobile phone and audio connectivity
DAB Satellite Radio
Digital clock
Dual instrumentation
Eco Driving Indicator
Hybrid System Indicator
Optitron instrumentation
Power meter
Steering wheel mounted controls
- audio / display / phone / voice
Voice command for phone

INTERIOR COMFORT AND CONVENIENCE

3-spoke, leather trimmed steering wheel
- manually multi-adjustable
Electrically operated windows, front and rear
Heated front seats
Electronic climate control air conditioning system
- automatic recirculation control
- clean air filter with active pollen removal mode
- separate driver/passenger temperature controls
Front centre armrest with storage box
Gearshift lever, leather trimmed with chrome inlay
Illuminated entry system
Push start button
Split-folding rear seats (60/40)
Tyre repair kit

¹ ABS = Anti-lock Braking System / BAS = Brake Assist System / BOS = Brake Override System / EBD = Electronic Brake-force Distribution / ECB-R = Electronically Controlled Braking-Regeneration / EPS = Electric Power Steering / TRC = Traction Control / VSC = Vehicle Stability Control

ADDITIONAL EQUIPMENT BY GRADE

ECO

(In addition to standard equipment)

- 15" alloy wheels
 - 195/65 R15 tyres
- 6-speaker premium audio system
 - AM/FM RDS tuner
 - in-dash single-slot CD player
- Dashboard inlay, storm black
- Cruise control
- Fabric upholstery
- Front seats, manually adjustable
 - 6-way adjustment, driver
 - 4-way adjustment, passenger
- Halogen headlights
 - auto on/off function
 - manual levelling
- Humidity sensor for Electronic Climate Control¹
- Luggage cover
 - extendable / retractable / storable
- Multi-information display
- Rear-view mirror, manual dimming adjustment
- Roof spoiler
 - advanced aerodynamic design

COMFORT

(In addition / different to Eco)

- 16" alloy wheels
 - 205/55 R16 tyres
- Additional USB port
- AUX socket, VTR compatible
- Front fog lights
- Lexus Media Display
 - 7" central, fixed colour display screen
 - audio, GPS ready
 - operated by rotary dial
 - multiple display screens to control/monitor various systems, e.g. audio/climate/phone
 - mirror linking facility to compatible smartphones²
- Rear parking monitor
- Rear-view mirror
 - electro chromatic (auto-dimming)

FACTORY OPTION

- Leather upholstery
- FACTORY OPTION PACK
- Smart Entry System
- Front and rear parking sensors
- Light Emitting Diode (LED) headlights:
 - LED low-beam headlights
 - auto levelling with high-pressure cleaners
 - LED front fog lights
- FACTORY OPTION PACK
- Smart Entry System
- Front and rear parking sensors
- Light Emitting Diode (LED) headlights:
 - LED low-beam headlights
 - auto levelling with high-pressure cleaners
 - LED front fog lights
- Leather upholstery

F SPORT

(In addition / different to Comfort)

- 17" alloy wheels, two-tone finish
- 215/45 R17 tyres
- Smart Entry System
- Front and rear parking sensors
- Light Emitting Diode (LED) headlights:
 - LED low-beam headlights
 - auto levelling with high-pressure cleaners
 - LED front fog lights
- F SPORT exterior design elements
 - accentuated spindle grille design
 - black roof
 - aerodynamically enhanced front bumper
 - distinctive L-mesh grille
 - side skirts / side logos
- F SPORT interior design elements
 - 3-spoke, perforated leather steering wheel with F SPORT emblem
 - aluminium scuff plates with 'LEXUS' inscription, front doors
 - black roof lining
 - dashboard inlay, silver metal film
 - drilled aluminium pedals
 - F SPORT fabric / Tahara trim with decorative contrast stitching
 - gearshift lever, unique F SPORT design with both smooth and perforated leather

Performance dampers

- Privacy glass
- Rear-view mirror
 - electro chromatic (auto-dimming)
- Roof spoiler
 - with twin cut-out aero-scoops
 - enhanced aerodynamics
 - improved handling stability
- FACTORY OPTION
- Leather upholstery
- FACTORY OPTION PACK
- Lexus Premium Navigation
- 10-speaker upgraded Panasonic audio system
 - in-dash single-slot DVD player
- Pre-Crash Safety (PCS)
 - millimetre-wave radar
 - Pre-Crash Brake Assist
 - Adaptive Cruise control (ACC)
- FACTORY OPTION PACK
- Lexus Premium Navigation
- 10-speaker upgraded Panasonic audio system
 - in-dash single-slot DVD player
- Pre-Crash Safety (PCS)
 - millimetre-wave radar
 - Pre-Crash Brake Assist
 - Adaptive Cruise control (ACC)
- Leather upholstery
- 13-speaker Mark Levinson Premium Surround
- FACTORY OPTION PACK
- Lexus Premium Navigation
- 10-speaker upgraded Panasonic audio system
 - in-dash single-slot DVD player
- Pre-Crash Safety (PCS)
 - millimetre-wave radar
 - Pre-Crash Brake Assist
 - Adaptive Cruise control (ACC)
- Leather upholstery
- 13-speaker Mark Levinson Premium Surround
- Sunroof, electric tilt and slide

EXECUTIVE

(In addition / different to Comfort)

- 4.2" colour multi-information display
- Thin Film Transistor (TFT) technology
- linked to multimedia technology
- 17" alloy wheels
 - 215/45 R17 tyres
- Light Emitting Diode (LED) headlights:
 - LED low-beam headlights
 - auto levelling with high-pressure cleaners
 - LED front fog lights
- Privacy glass
- Pre-Crash Safety (PCS)
 - millimetre-wave radar
 - Pre-Crash Brake Assist
 - Adaptive Cruise control (ACC)
- 13-speaker Mark Levinson Premium Surround
- Dashboard inlay, techno black
- Digital clock, with GPS time adjustment
- Door mirrors
 - electrically auto-folding
 - electro chromatic (auto-dimming)
- Front seats, electrically adjustable
 - 8-way with memory and lumbar support (driver)
 - 4-way (passenger)
- Front and rear parking sensors
- Leather upholstery
- Lexus Premium Navigation plus
 - 7" fixed central, colour display screen
 - operated by Remote Touch
 - advanced navigation system using SD card technology
- Lexus Connected Services
 - Online Search / Google Street View® / Panoramio®
 - Send Route to Car / Connected Traffic / Traffic Bar
 - Digital Terrain Model / Route Trace Registration
 - Ecological Route / Speed Camera Guidance
 - Urgent Traffic Event Notification / QR code of destination
- Parking assist monitor with on-screen guides
- Smart entry system
- FACTORY OPTION
- Sunroof, electric tilt and slide

¹ Only specified on the CT 200h Eco grade. Not available on any other CT 200h grade.

² Please consult your local Lexus Authorised Retailer for information regarding the compatibility of your smartphone.

OPTIONS AND PACKS

OPTIONS	ECO	COMFORT	F SPORT	EXECUTIVE
13-speaker Mark Levinson® Premium Surround system ¹	—	—	O	S
17" alloy wheels, standard finish (215/45 R17 tyres)	—	—	—	S
Aluminium scuff plate, front doors ²	—	—	S	—
Anti-theft system comprising intrusion sensor and siren	S	S	S	S
Black roof	—	—	S	—
Cruise control	S	S	S	S
Digital Audio Broadcasting (DAB) radio ³	S	S	S	S
Front fog lights	—	S	S	S
Lexus Navigation	O ⁴	O	O	—
Glass sunroof, electric tilt/slide	—	—	O	O
Parking assist sensors, front and rear	—	—	O	S
Performance dampers, front and rear	—	—	S	S
Privacy glass	—	—	S	S
Rear-view monitor ⁵	—	S	S	S
Rear-view mirror, electro chromatic (auto-dimming)	—	S	S	S
Smart entry system	—	—	S	S
Wood inlay (choice of ash burl, bamboo or shimamoku) ⁶	O	O	—	O

PACKS	ECO	COMFORT	F SPORT	EXECUTIVE
Multimedia				
Lexus Media Display	—	S	S	—
Lexus Premium Navigation	—	—	O	S
Lexus Premium Navigation with 13-speaker Mark Levinson® upgrade	—	—	O ⁷	S
Refinement				
Leather	—	—	—	S
F SPORT leather	—	—	O	—
Advanced safety				
Light Emitting Diode (LED) headlights	—	O	S	S
Pre-Crash Safety (PCS)	—	—	O	S

— = not available / O = available to order as an option or a pack at extra cost / S = standard

¹ This item is only available to order as a single option on Executive grade, where it is supplied with an in-dash, single-slot DVD player. On F SPORT, it is available to order as part of the Lexus Premium Navigation & Mark Levinson® upgrade pack which includes the in-dash, single-slot DVD player.

² The standard specification version in the F SPORT has the LEXUS inscription in jet black, whilst for the Executive grade option, the lettering is in silver.

³ Digital Audio Broadcasting (DAB) radio can be ordered in combination with the Lexus Media Display pack for the Eco grade, or as a single option for the Comfort, F SPORT and Executive grades.

⁴ For Eco grade only, this accessory option must be ordered in combination with the Lexus Media Display pack option.

⁵ Rear-view monitor, without on-screen guides can be ordered in combination with the Lexus Media Display pack for the Eco grade, or as a single option for the Comfort and F SPORT grades. Rear-view monitor, with on-screen guides is standard for the Executive grade.

⁶ Please see pages 56 to 59 for further information on, and images of, the wood choices.

⁷ This pack can only be ordered in combination with the F SPORT leather pack.

Please note: not all options and packs are available in all countries. Also, certain options and/or packs may need to be ordered in combination with one another or cannot be ordered together. Please consult your local Lexus Authorised Retailer for further information regarding options and/or pack availability in your country.

MULTIMEDIA

Lexus Media Display

Lexus Media Display

- 7" central, fixed colour display screen
- audio, GPS ready
- operated by rotary dial
- multiple display screens to control/monitor various systems, e.g. audio/climate/phone
- mirror linking facility to compatible smartphones¹
- additional USB port
- AUX socket, VTR compatible
- Digital Audio Broadcasting (DAB) radio²
- rear-view monitor without on-screen guides³

Lexus Premium Navigation

Lexus Premium Navigation

- 7" fixed central, colour display screen⁴
- operated by Remote Touch
- advanced navigation system using SD card technology

Lexus Connected Services

- Online Search / Google Street View® / Panoramio®
- Send Route to Car / Connected Traffic / Traffic Bar
- Digital Terrain Model / Route Trace Registration
- Ecological Route / Speed Camera Guidance
- Urgent Traffic Event Notification / QR code of destination
- 4.2" TFT colour multi-information display linked to multimedia
- 10-speaker upgraded Panasonic® audio system
- additional USB port⁴
- AUX socket, VTR compatible⁴
- Digital Audio Broadcasting (DAB) radio²
- digital clock, with GPS time adjustment
- in-dash single-slot DVD
- parking assist monitor with on-screen guides
- rear-view mirror, electro chromatic (auto-dimming)

Lexus Premium Navigation

with Mark Levinson® upgrade

Contents of Lexus Premium Navigation with

13-speaker Mark Levinson® Premium Surround

(replacing 10-speaker upgraded Panasonic® audio system)

REFINEMENT

Leather

Leather upholstery

- heated front seats

F SPORT leather

F SPORT leather upholstery

Front seats, electrically adjustable

- 8-way with memory and lumbar support (driver)
- 4-way (passenger)

Door mirrors

- electrically auto-folding
- electro chromatic (auto-dimming)

Heated front seats

ADVANCED SAFETY

Light Emitting Diode (LED) headlights

LED low-beam headlights

- auto-levelling with high-pressure cleaners
- LED front fog lights

Pre-Crash Safety (PCS)

PCS system

- millimetre-wave radar
- Pre-Crash Brake Assist
- Pre-Crash Brake
- Pre-Crash Seatbelts
- Adaptive Cruise Control (ACC)⁵

¹ Please consult your local Lexus Authorised Retailer for information regarding the compatibility of your smartphone.

² Digital Audio Broadcasting (DAB) can be added to the Lexus Media Display pack or the Lexus Premium Navigation pack at additional cost.

³ Rear-view monitor without guides can be added to the Lexus Media Display pack at additional cost.

⁴ These items only form part of the Lexus Premium Navigation pack contents when ordered for Eco grade. For Comfort and F SPORT, these items are already included within the standard specification for these grades and are not part of the pack.

⁵ Operates from 50 km/h.

ACCESSORIES

REAR BICYCLE HOLDER

A lightweight yet high strength stand-alone lockable design for carrying one or two bicycles.



REAR BUMPER PROTECTION PLATE

Guards the bumper against scratching when loading or unloading the luggage space.



ROOF RACK

This lockable and lightweight aluminium roof rack is aerodynamically shaped to reduce wind noise. Easy to install and remove, it forms a strong base for a range of optional carrying and storage attachments.



FRONT GRILLE GARNISH

With a piano black finish to highlight the dynamic profile of the CT 200h's 'spindle grille'.



CARBON INSERT SET

Sports inspired insert panels with a carbon fibre finish for the dashboard and door control panels. The set complements the Lexus carbon fibre-look side mirror covers.



PORTABLE DVD PLAYER

This DVD player with a 7" screen offers great entertainment for rear seat passengers on longer journeys. It has comprehensive multi-media flexibility, USB and SD card slots and smartphone AV input, and can also be used at home with a suitable power adapter.



HOLDER FOR iPad®

The holder slots into the rear entertainment system docking device and provides a stable base for rear seat passengers to use their iPad or iPad Air and watch content as they travel. It is available in powered and non-powered versions.



ILLUMINATED SCUFF PLATES

A stylish design feature that also provides tough protection for the door sill paintwork.



HORIZONTAL CARGO NET

Noise and vibrations caused by luggage sliding in the boot can be a distraction to safe driving. This horizontal net provides a convenient solution by firmly securing your luggage.

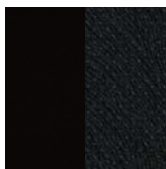


LUGGAGE MAT

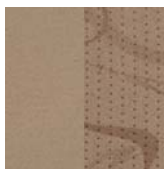
A stylish textile mat to protect your boot carpet. Its tailored design fits around or across the rear seat backs when one or both are folded flat.

INTERIOR COMBINATIONS

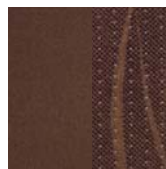
FABRIC¹



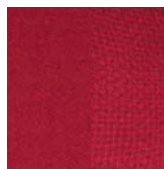
Panther Black



Silk Ivory



Autumn Brown

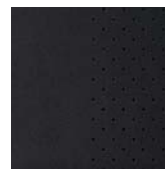


Lava Red

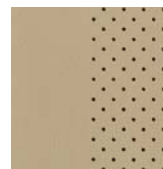


Ocean Blue

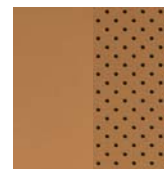
LEATHER²



Black

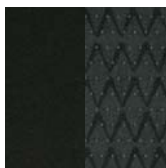


Ivory

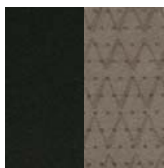


Topaz Brown

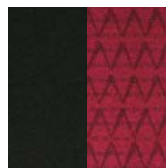
F SPORT FABRIC / TAHARA TRIM³



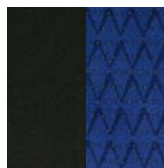
Black



Slate Grey



Dark Rose

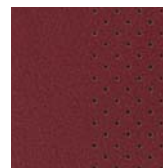


Blue

F SPORT LEATHER⁴

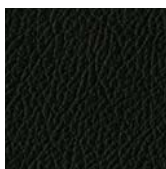


Galaxy Black



Dark Rose

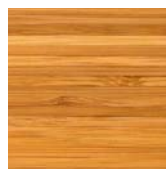
INLAYS⁵



Storm Black



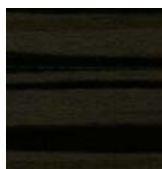
Techno Black



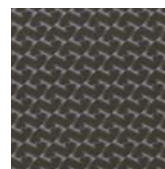
Tropical bamboo



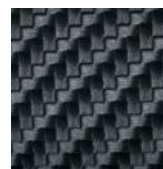
Dark Brown, ash burl



Black & Grey, shimamoku



Silver, metal film



Carbon Fibre, set of inlays

F SPORT INLAYS⁶

¹ Fabric trim is standard for Eco and Comfort grades.

² Leather, in a choice of three colours, is specified as standard on Executive grade.

³ Fabric / Tahara trim is exclusively specified as standard for the F SPORT model.

⁴ F SPORT leather, in a unique design and two exclusive colours, is optional for the F SPORT model.

⁵ Storm Black inlay is standard for Eco and Comfort grades, while Techno Black is standard for the Executive grade. A choice of three wood inlays, as illustrated, can be ordered as an option for Eco, Comfort and Executive grades.

⁶ Silver metal film is the standard inlay for F SPORT. A set of carbon fibre inlays is exclusively available as an after-sale upgrade for F SPORT.

The images on the following 3 pages illustrate a selection of the interior combinations available. Your local Lexus Authorised Retailer will be pleased to provide you with any further help.

Panther Black fabric with Storm Black inlay
(Eco and Comfort)



Lava Red fabric with Black and Grey shimamoku inlay
(Eco and Comfort)



Autumn Brown fabric with Dark Brown ash burl inlay
(Eco and Comfort)



Ocean Blue fabric with Techno Black inlay
(Eco and Comfort)



INTERIOR COMBINATIONS

Ivory leather with Tropical bamboo inlay

(Executive)



Topaz Brown leather with Dark Brown ash burl inlay

(Executive)



Black leather with Black and Grey shimamoku inlay

(Executive)



Slate Grey fabric / Tahara trim with Silver, metal film inlay
(F SPORT)



Blue fabric / Tahara trim with Silver, metal film inlay
(F SPORT)



Galaxy Black leather with a set of Carbon Fibre inlays
(F SPORT)



Dark Rose leather with a set of Carbon Fibre inlays
(F SPORT)



EXTERIOR COLOURS

F WHITE (083)^{1,4}



SONIC WHITE (085)²



MERCURY GREY (1H9)⁴



SATIN SILVER (1J4)⁴



BLACK (212)³



GRAPHITE BLACK (223)



MORELLO RED (3R1)⁴



RED (3T2)^{3,4}



SIENNA BROWN (4V3)²



ULTRASONIC BLUE (8U1)⁴

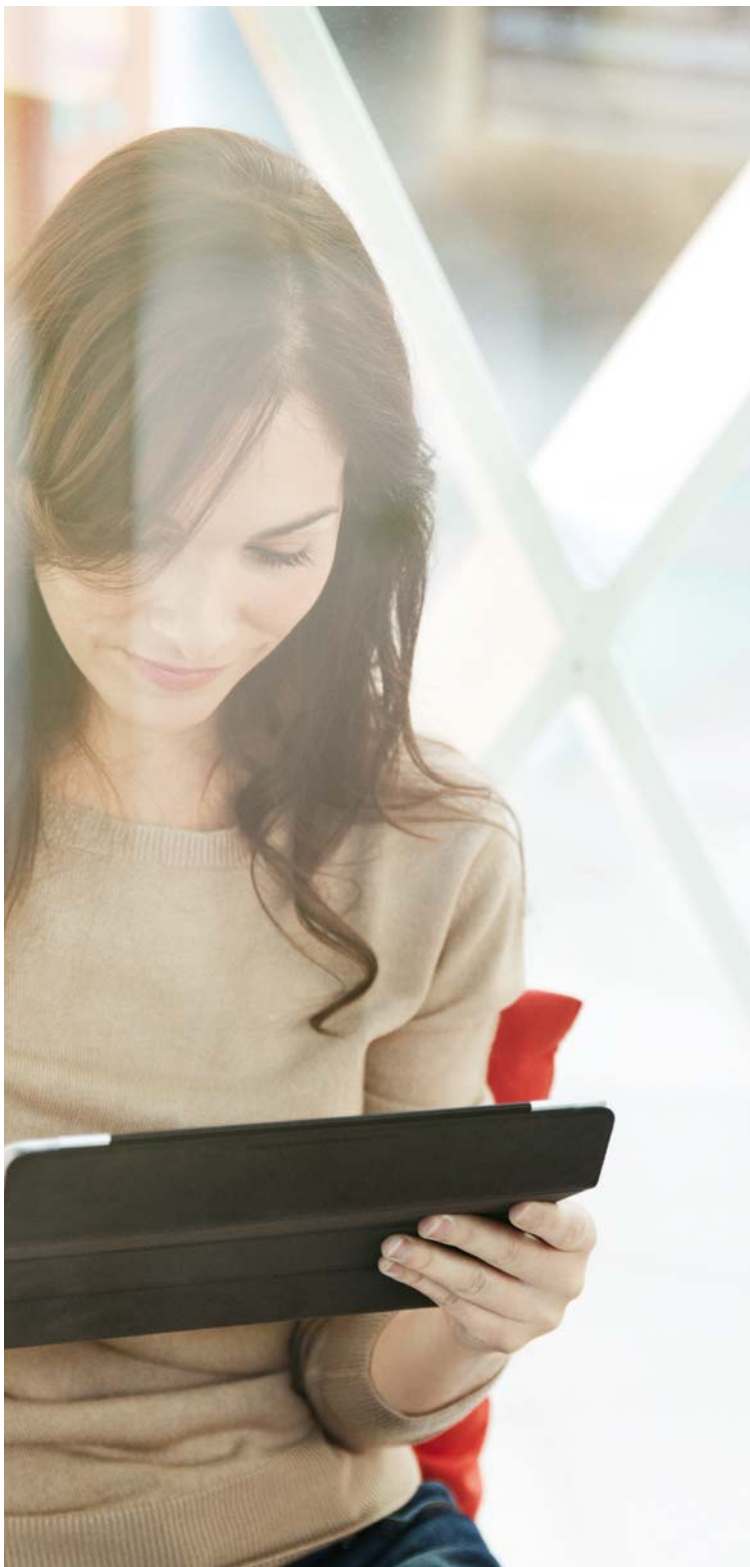


DEEP BLUE (8X5)⁴



¹ Exclusive to F SPORT.
² Not available on F SPORT.
³ Solid colour
⁴ Also available with optional black roof on F SPORT.

Please note: due to printing variances, actual paintwork colours may vary slightly from those illustrated.



LEXUS CARE

At Lexus, we believe in Creating Amazing. This is as true for our service and after-sales programmes as it is for the cars themselves. Throughout your vehicle's life, Lexus Care ensures a first class ownership experience, offering bespoke service and maintenance plans, each designed to provide complete satisfaction and total peace of mind.

Lexus cars are equipped with the world's most advanced technology to provide an amazing 'Omotenashi' (the Japanese spirit of hospitality) experience. Reflecting our unique approach to building cars, we also aim to treat each customer as we would a guest in our home. This world-class service philosophy has led to details like (for example) fresh flowers in handover rooms, spotlessly clean service bays, and a complimentary car wash.

After delivering each new Lexus, we see caring for your car as the equivalent of caring for you, our customer. Lexus Authorised Retailers are committed to delivering the highest level of customer satisfaction. You can catch up on the news with a cappuccino in our comfortable lounge area, or browse the internet at your leisure. Meanwhile, our technicians perform their tasks with optimum efficiency to get you back on the road with minimum interruption to your day.



LEXUS SERVICE

Lexus Service is an invitation for you to entrust the wellbeing of your Lexus to dedicated professionals and an opportunity for us to offer unparalleled levels of care. Exhaustive staff training and continuous career development programmes help provide you with the peace of mind that we're doing our utmost to ensure your Lexus stays in showroom condition.

- Professional Lexus technicians
- Genuine Lexus parts
- Lexus service history protects re-sale value
- Thorough visual safety report
- Lexus service tailored to your needs
- State-of-the-art facilities and equipment

LEXUS WARRANTY

- 3-year or 100,000 km comprehensive warranty
- 3-year surface rust and paintwork warranty
- 12-year corrosion warranty
- 5-year or 100,000 km warranty on certain hybrid components

LEXUS MOBILITY

We want to ensure that you enjoy driving your Lexus anywhere in Europe with complete peace of mind. This is why we provide free Lexus Euro Assistance 24* for the first three years of ownership. This programme ensures your mobility, to take you where you need to go. Part of this could include, for example, towing, hotel accommodation, car hire, repatriation of the vehicle and many more services should your Lexus be immobilised, stolen, or involved in a collision.

* Conditions may vary between countries. Please consult your Lexus Authorised Retailer or Repairer for details.



EXPERIENCE THE CT

Please contact your nearest Lexus Authorised Retailer for a test drive.

More about the CT:

www.lexus.ee

www.lexus.lv

www.lexus.lt

www.twitter.com/LexusEurope

© 2015 Lexus Europe* reserves the right to alter any details of specifications and equipment without notice. Details of specifications and equipment are also subject to change to suit local conditions and requirements. Please enquire at your local Lexus Authorised Retailer of any such changes that might be required for your area.

Note: vehicles pictured and specifications detailed in this brochure may vary from models and equipment available in your area. Vehicle body colour might differ slightly from the printed photos in this brochure.

Taking care of the environment is a priority for Lexus. We take many measures to ensure that during the lifecycles of our vehicles - from design, production, distribution, sales and service to end-of-life - their environmental impact is minimised. Your retailer will be happy to provide more information on end-of-life vehicle requirements.

* Lexus Europe is a division of Toyota Motor Europe NV/SA.

Printed in Europe, August 2015

